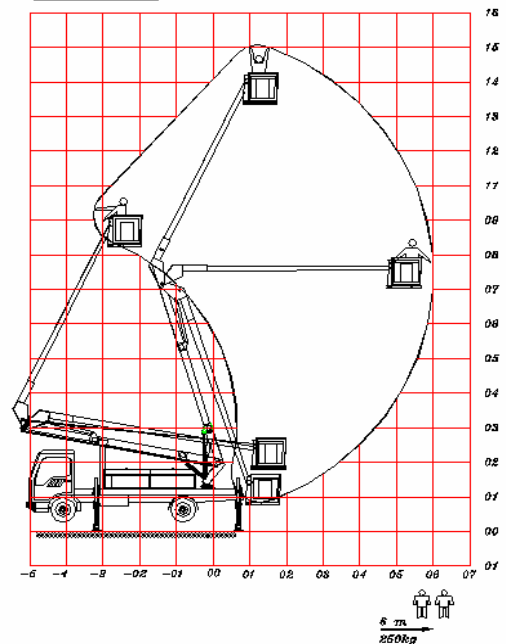


Articulated Baskets

Model EL 13-15-20-25 AP



Load chart



The articulated basket is electrically insulated; hydraulically operated, mainly used for servicing lampposts, telephone lines and similar high utilities. These can be mounted on NPR, Hyundai, and Mercedes. The baskets can be equipped to operate other hydraulic tools (option).

Standard Features:

- Working heights: varying heights.
- Support points on the sides of the vehicle proportionate to the maximum working height



Basket

- Payload: 250 Kg
- Basket dimensions: 110X60X100 cm
- Basic electric insulation: 10 KV
- Rotation 360° both directions.
- The basket remains vertical at all times at all ladder positions



Outriggers

- 4 hydraulic stability outriggers
- Each outrigger operates individually.

Boom :

- Articulating type which extends hydraulically through two double action hydraulic cylinders.
- Consists of two sections .
- The material of boom is adequate strengths ` (bearing, shearing, tensile, and compressive)



Hydraulic system

- The hydraulic pump is operated via a P.T.O. from the vehicle's engine
- Hydraulic tank capacity: 60 lit equipped with a level indicator and strainer
- Hydraulic circuit is equipped with 10 micron hydraulic filter



Hydraulic cylinders

- The hydraulic cylinders are of the double-acting type, designed and sized for the required working needs.

Control system :

- Two control units, one in the basket and one at the base

The vehicle is designed and manufactured .



Safety Features:

- Hydraulic Cylinder are equipped with counter valve .
- Thermometer for the oil tank.
- Hand hydraulic pump to descent booms and retract outriggers in case of main pump failure.
- (Relief valve) in case of pressure increase.
- Basket equipped with safety belt.
- General safety stop push bottom for emergency (option).
- Warning light in truck cab showing the outriggers lowered (option).

Optional Features at extra cost:

- Side cabinets along the chassis for storage of spare parts.
- 2 large tool boxes above the tires.
- Very conservative design to ensure non deflection in booms at max. outreach.
- Rotating flasher installed on the driver cab for voice alarm
- Water tank equipped with a pump for washing pavements and ad boards*
- Light for night work
- Spray paint unit (gun + compressor)
- Television camera
- Rear bumper for the vehicle.
- 12 V outlet inside the basket
- Side or rear ladder for operators
- Hydraulic outlets for operating hydraulic tools.
- Alarm for wrong leveling of the platform over 5%(option) .

ELECTROLAB

Web Site: www.electrolabtrucks.com

Dallah building, 7 A Cornaish ELnil, Maadi, Cairo , Egypt

Tell ++(20)2 25285213/14/15/16

Fax ++25285212

zip code : 11431

Email: electrolab@electrolabtrucks.com