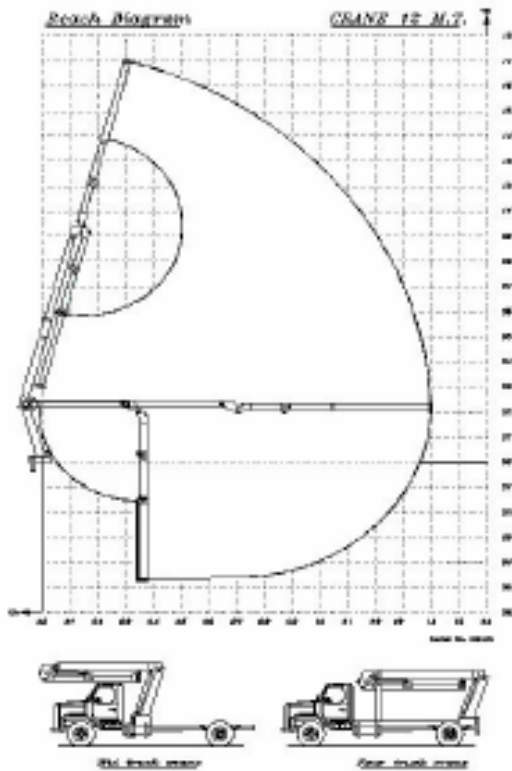


Back side cranes are the most needed tool in the good transportation trucks and is the most useful for contractors, Military forces and goods distribution companies.



Distance (m)	2	3	4	5	6	7
Load (ton)	15	10	7.5	6	5	4.28

Moment:

- 3 Meter.ton
- 10 tons at 3 meters.
- 6 tons at 5 meters.

Body structure:

- Frame designed to increase strength.
- Certain points are reinforced providing exceptional recovery capability.
- Straight sides and 90° angles to increase strength.
- Low profile design to improve visibility.
- Mounting of the body is made on a sub frame tied to the truck chassis by a number of U bolts without welding or making holes or touching the chassis.

Hydraulic:

- Cylinders are reliable.
- Valve block is installed on the side of the boom to simplify service.
- Counter balance to ensure safety in case of sudden Hydraulic pressure drop.
- Hydraulic tank is equipped with valve in the O/P to simplify service.
- Strainer in the Hydraulic tank cover.
- Oil level indicator.
- Oil temperature gauge (option).
- Oil pressure gauge (option).
- Pressure relief valve.
- Alarm for high pressure.
- O/P in both sides to operate hydraulic tools (option).

Cabin (option):

- To be installed adjacent to the crane to seat the operator comfortably and to have clear view of the operation of the boom

Boom:

- Hydraulic Boom extension.
- Hydraulic Boom height adjustment.
- Boom rotation 360 degrees.

Winch (option):

- Winch mounted on the boom to avoid adjusting wire in case of boom movements.
- Driven by hydraulic motor.
- Automatic mechanical brake (option).
- 360° rotational boom heads for multidirection winching capability.

Control:

- On both sides of the body.
- Reliable mechanism to ensure trouble free operation.
- Modular construction easy to disassemble.
- Remote control 4 meters away(Optional).

Outriggers:

- On both sides.
- Outriggers for maximum rigidity.
- Outriggers are hydraulically extended.

ELECTROLAB

Dallah building,7 A Cornaish ELnil,Maadi,Cairo, Egypt Zip Code 11431

www.electrolabtrucks.com

Tel: +20-2-25285213 (4)(5)(6)

Fax:+20-2-25285212

Email: electrolab@electrolabtrucks.com