



**Standard suction truck with optional Mechanical cable for sewer cleaning system operated from the Truck powerful engine.**

### Debris Tank:

- Galvanized steel or stainless steel (optional)
- Sizes 4 & 6 & 8 & 10 & 15m<sup>3</sup>
- Single Hydraulic cylinder to tilt the tank 50o(option)
- Rear valve 4" for sludge suction/discharge.
- Float ball safety & dismount box.
- Several shell and head material thickness depending on volume
- Hydraulic door locking with manual lock in case of Hydraulic failure. (option)
- Heavy duty Rubber seals could be easily replaced
- Full Diameter size rear door hinged at the top.(option)
- Cleaning handgun with shut off valve.
- Automatic shut off engine when water level is zero. (optional)
- 1 A frame 3/18" plate baffle
- 20" diameter man way below tank (option)

### Power transmission:

- Vacuum pump operates directly from the PTO Extra.
- An extra optional PTO to drive Hydraulic pump to operate a hydraulic circuit.
- Optional Hydraulic transmissions to drive the vacuum pump which is clean and easy to maintain and avoids any mechanical miss alignment.
- Sufficient cooling for oil even in tropical conditions.

### Vacuum valve:

- The pump from battioni company – rotary pump-self lubrication
- Protection valve to stop vacuum at preset level.
- Pump flow rate 5000/12000 l/m.
- Blower operated from truck engine.
- Signs vacuum relief valve.
- Stainless steel Strainer to protect the Blower.
- Heavy duty Exhaust silencer.
- Steel pipes & rubber hose.
- Equipped with a reverse valve to help the rear discharge (option)

### Electric System:

- Color Coded wires.
- Water sealed connections.
- Lighting around the truck according international standards.
- One spot light mounted on the rear end of the truck

### Paints

- The tank is sanded.
- 3 layers of paints
- The system components are treated to withstand rust, corrosion in sewage.

### Oil Cooling:

Heavy duty oil cooler.

## Frame

- No Drills or welds of any kind to the truck chassis
- The system is built on a sub frame fastened to the truck chassis by suitable amount of fasteners.

## Controls & Indicators

- Start & stop vacuum pump or Blower.
- Vacuum Pressure.
- 3 Level indicator for debris tank 5" diameter.
- Accelerator for Engine RPM.
- Engine RPM indicator at Driver site.
- Engage & disengage PTO
- Alarm light for P.T.O operation.
- Level indicator
- Automatic shut off vacuum when tank is full.
- Fixed control and optional Remote 10 meters. (option)
- Debris tank tilting.(option)
- Oil temperature, level & Pressure.(option)
- Oil Pressure relief valve.(option)
- Alarm for oil max pressure.(option)

## Servicing:

- Easy to reach any component
- Spare parts available
- Does not need highly skilled personnel.

## Suction Hose:

- 4", 6" or 8" inner diameter heavy-duty rubber hose capable to withstand the max vacuum pressure.
- Suction tubes are mounted on rear door. (option)

## Tool Box:

- Mud guards on back wheels.
- Reasonable size heavy-duty water-resistant toolbox.
- Open hose box at the sides of tank

## Sewer cleaning cable system (option)

- 2 meter Mechanical cable sections can reach up to 60m
- Different types of saws in the cable front tip.
- To ensure cleaning of the sewage pipe.
- The cable is rotated by Hydraulic motor.
- The control valve would rotate the Motor clock wise & anti clock wise.
- The Hydraulic motor torque is adjusted by the relief valve to protect the operator in case the cable would be stuck with a heavy obstacle.
- The caret is powered by the hydraulic system of the truck via a 20m long Hydraulic Hose reel with automatic retract.
- The caret has a handle so the operator could push it to the front & rear like a baby wagon to push the sewer cable into the sewage pipe.

## Chassis:

- 4 x 2 & 6 x 4 or 8 x 4 chassis depending on tank sizes.
- 150 to 420 HP depending on chassis used.
- Wheelbase depends on tank sizes type of chassis.
- 2 meters of suction tubes suitable for quick coupling made of aluminum or stainless steel. (option)
- Full length tank mounting for the hoses with 4 mud flaps



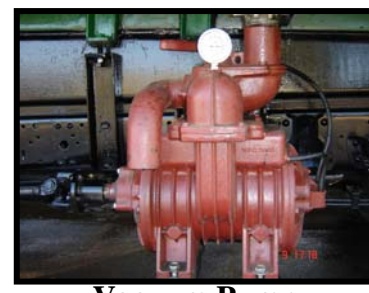
level indicator glass



primary safety Valve



secondary safety valve



Vacuum Pump

## ELECTROLAB

Dallah building,7 A Cornaish ELnil,Maadi,Cairo, Egypt Zip Code 11431

[www.electrolabtrucks.com](http://www.electrolabtrucks.com)

Tel: +20-2-25285213 (4)(5)(6)

Fax:+20-2-25285212

Email: [electrolab@electrolabtrucks.com](mailto:electrolab@electrolabtrucks.com)